

KWM-20882CWB

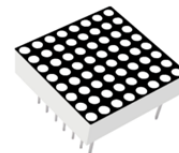
20mm(0.8inch) White 8×8 Dot Matrix Display

Φ1.9mm 8×8 Dot Matrix LED Display

Technical Data Sheet

Features

- 0.8-inch matrix height
- Dot size 1.9mm
- High reliability
- Low power consumption
- A wide range of single LED colors is available
- X-Y stackable
- Easy mounting on PCB or sockets
- I.C. compatible
- RoHS compliant



Descriptions

- The KWM-20882CWB is a 20mm(0.8inch) matrix height 8×8 dot matrix display.
- The display provides excellent reliability in bright ambient light.
- The devices are available as either common anode or common cathode.
- The device is made with white diffused dots and black surface.

Applications

- Home and smart appliances
- Display time and digital combination
- Test and measurement equipment
- Industrial and instrumental applications
- Large Panel Indicators
- Information displays
- Control units

Device Selection Guide

Part No.	Emitting Color	Circuit Common
KWM-20882CWB	White	Common Row Cathode

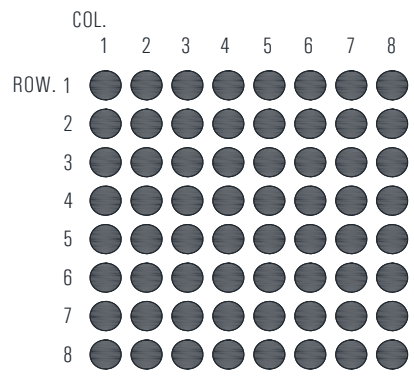
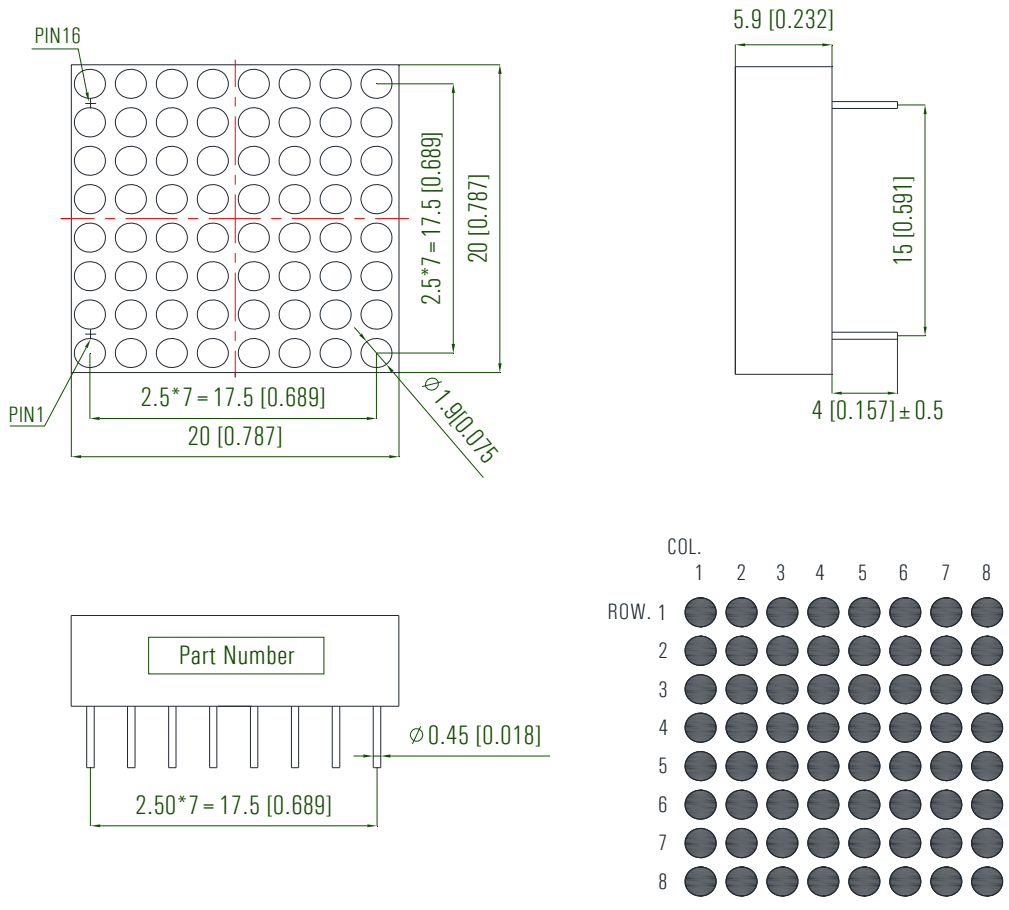
KWM-20882CWB

20mm(0.8inch) White 8×8 Dot Matrix Display

Φ1.9mm 8×8 Dot Matrix LED Display

Technical Data Sheet

Package Dimension



Notes:

1. All dimensions are in millimeters (inches).
2. Tolerance is ± 0.25 mm (.010") unless otherwise noted.
3. The specifications, characteristics and technical data described in the datasheet are subject to change without prior notice.

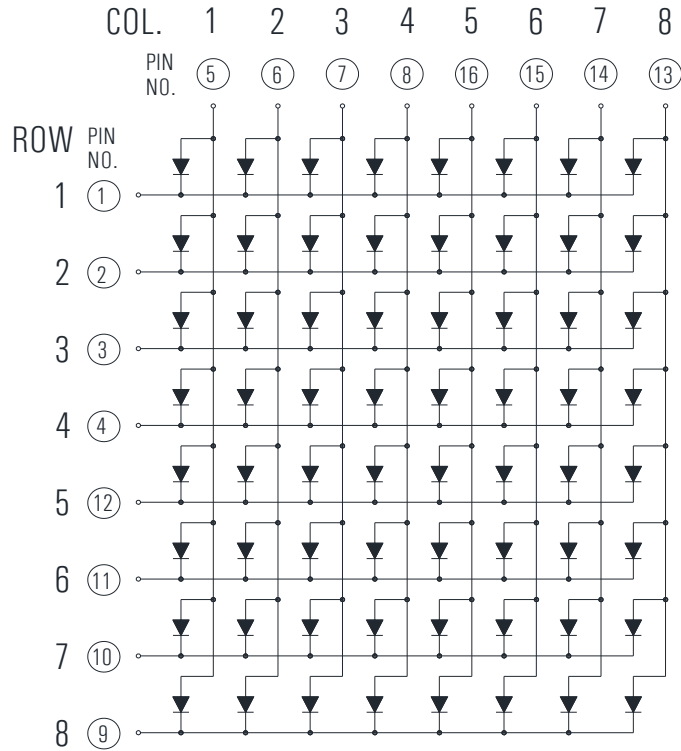
KWM-20882CWB

20mm(0.8inch) White 8×8 Dot Matrix Display

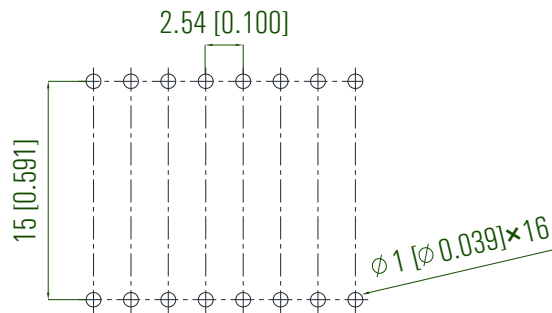
Φ1.9mm 8×8 Dot Matrix LED Display

Technical Data Sheet

Internal Circuit Diagram



Recommended PCB Layout:



Absolute Maximum Ratings at T_A=25°C

Parameters	Symbol	Max	Unit
Power Dissipation (Per Chip)	P _D	64	mW
Peak Forward Current (Per Dot) (1/10 Duty Cycle, 0.1ms Pulse Width)	I _{FP}	40	mA
Forward Current (Per Dot)	I _F	20	mA
Reverse Voltage (Per Chip)	V _R	5	V
Operating Temperature Range	T _{opr}	-40°C to +80°C	
Storage Temperature Range	T _{stg}	-40°C to +85°C	
Soldering Temperature	T _{slid}	260°C for 5 Seconds	

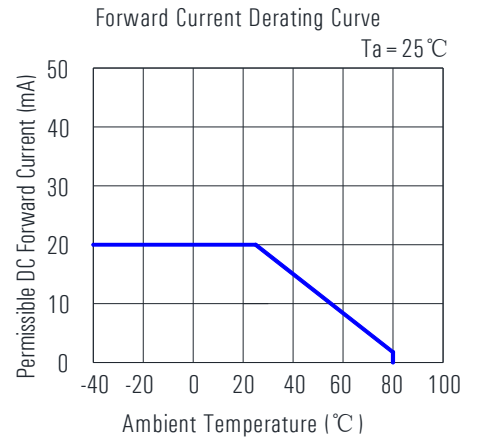
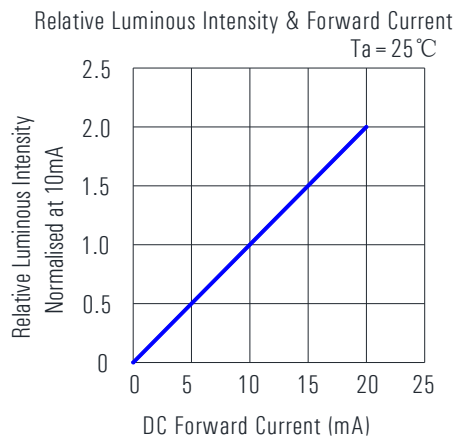
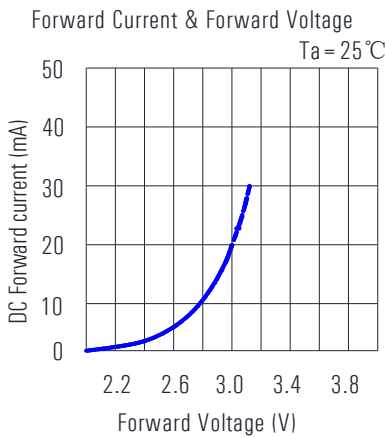
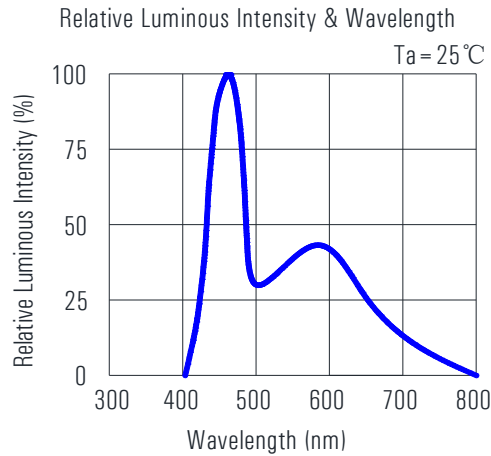
Electrical Optical Characteristics at T_A=25°C

Parameters	Symbol	Min.	Typ.	Max.	Unit	Test Condition
Average Luminous Intensity	I _v	33.0	65.0	---	mcd	IF=5mA (Note a)
		65.0	130.0	---	mcd	IF=10mA (Note a)
Luminous Intensity Matching Ratio	I _{v-m}	---	---	2:1		IF=20mA
Chromaticity Coordinates	x	---	0.27	---		IF=20mA (Note b)
	y	---	0.28	---		
Spectral Line Half-Width	Δλ	---	20	---	nm	IF=20mA
Forward Voltage (Per Dot)	V _F	---	3.0	3.2	V	IF=20mA (Note c)
Reverse Current (Per Dot)	I _R	---	---	50	μA	VR=5V

Notes:

- Luminous intensity is measured with a light sensor and filter combination that approximates the CIE eye-response curve.
Tolerance of Luminous Intensity: ± 10%.
- The chromaticity coordinates (x, y) is derived from the 1931 CIE chromaticity diagram.
- Tolerance of Forward Voltage: ± 0.1V.

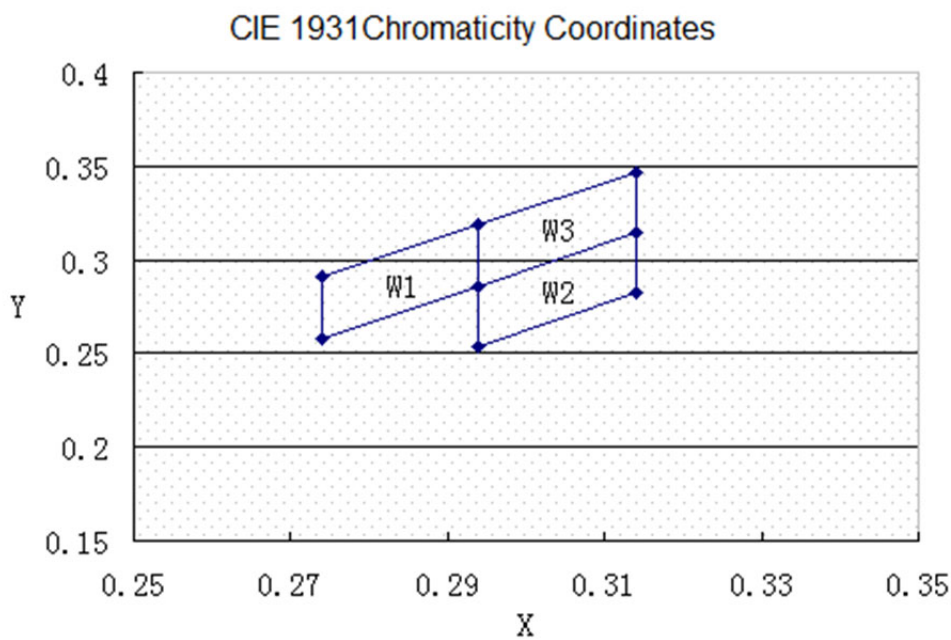
Typical Electrical/Optical Characteristic Curves at $T_A = 25^\circ\text{C}$



Chromaticity Coordinates Specifications for Bin Rank**Color Bin at IF = 10mA**

Bin Code	CIE 1931 Chromaticity Coordinates				
		x	y	x	y
W1	x	0.274	0.274	0.294	0.294
	y	0.258	0.291	0.319	0.286
W2	x	0.294	0.294	0.314	0.314
	y	0.254	0.286	0.315	0.282
W3	x	0.294	0.294	0.314	0.314
	y	0.286	0.319	0.347	0.315

Tolerance on each Hue (x, y) bin is +/- 0.01.



KWM-20882CWB

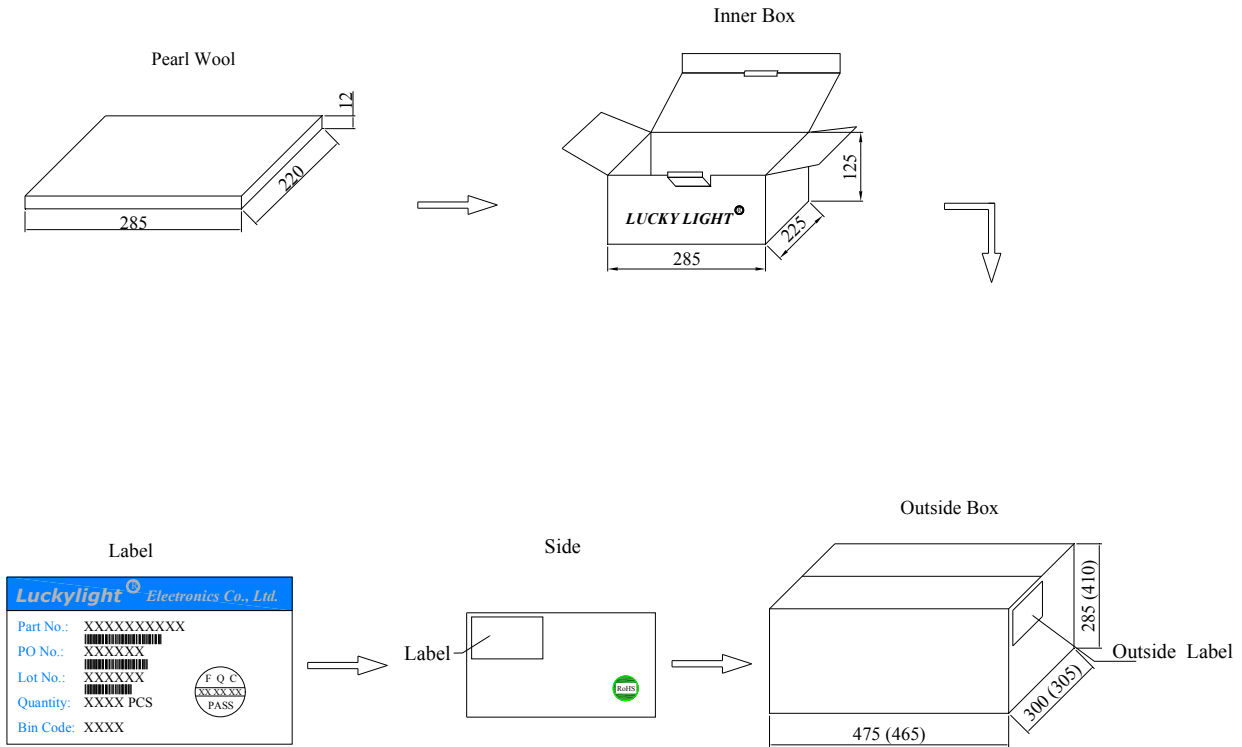
20mm(0.8inch) White 8x8 Dot Matrix Display

Φ1.9mm 8x8 Dot Matrix LED Display

Technical Data Sheet

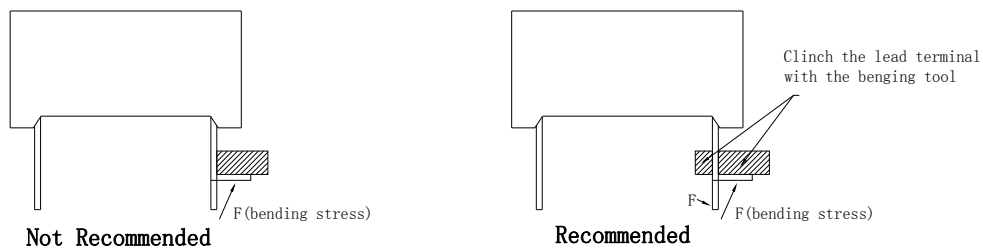


Packing & Label Specifications



Precautions**Through Hole Digital Display Mounting Method****1. Lead Forming**

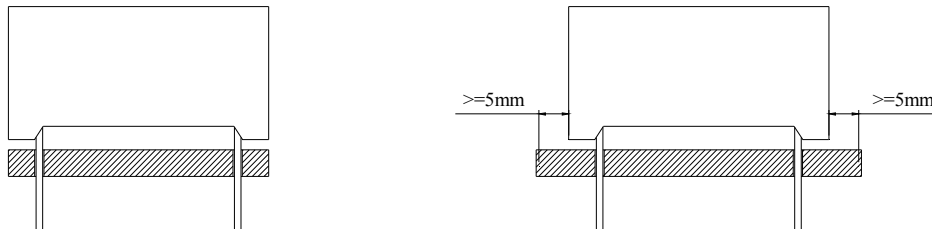
- 1.1. Do not bend the component leads by hand without proper tools.
- 1.2. The leads should be bent by clinching the upper part of the lead firmly so that the bending force is not exerted on the plastic body.

**2. Installation**

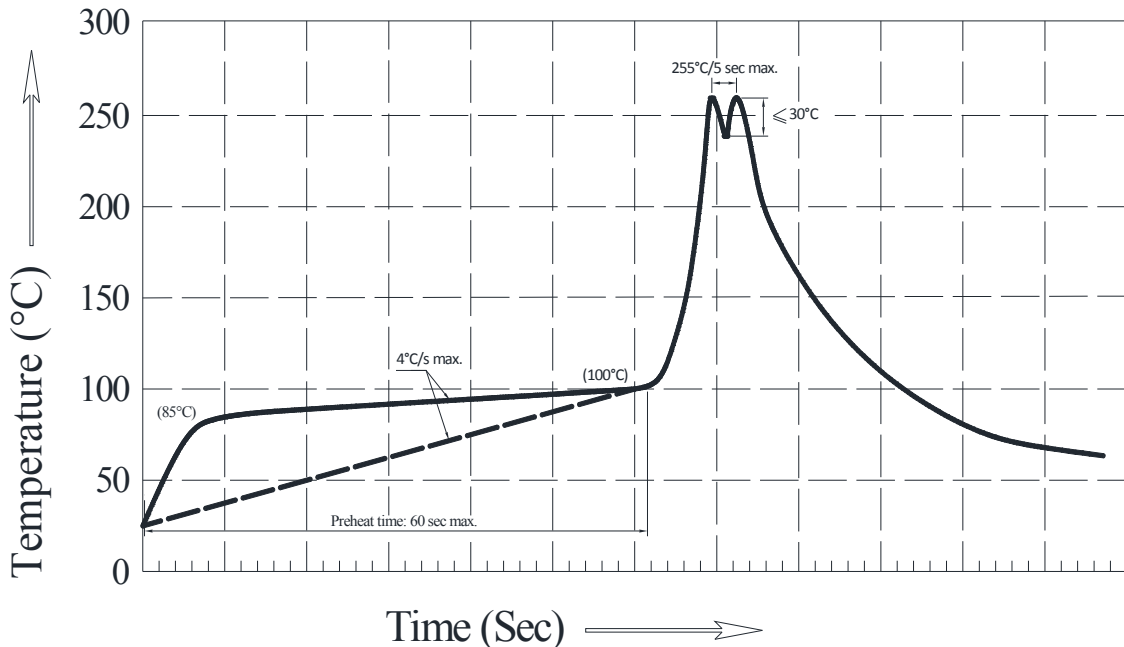
- 2.1. The installation process should not apply stress to the lead terminals.
- 2.2. When inserting for assembly, ensure the terminal pitch matches the substrate board's hole pitch to prevent spreading or pinching of the lead terminals.



- 2.3. The component shall be placed at least 5mm from the edge of the PCB to avoid damage caused by excessive heat during wave soldering.



3. Recommended Wave Soldering Profiles



Notes:

- 3.1. It is recommended to pre-heat at a temperature of 105°C or lower (measured using a thermocouple attached to the LED pins) before immersion in the solder wave, with a maximum solder bath temperature of 260°C.
- 3.2. The peak wave soldering temperature should be between 245°C to 255°C for 3 seconds (maximum of 5 seconds).
- 3.3. Avoid applying stress to the epoxy resin when the temperature exceeds 85°C.
- 3.4. Fixtures should not exert stress on the component during mounting and soldering processes.
- 3.5. Only one wave soldering pass is allowed.
- 3.6. Maintain the PCB top-surface temperature below 105°C during wave soldering.

4. Soldering General Notes

- 4.1. Through-hole LED digital displays are not suitable for reflow soldering.
- 4.2. If components will undergo multiple soldering processes or other high-heat treatments, please consult LuckyLight for compatibility.

5. Cleaning

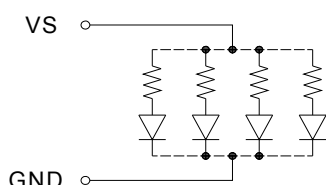
- 5.1. Mild "no-clean" fluxes are recommended for soldering purposes.

- 5.2. If cleaning is necessary, Luckylight suggests washing components with water only. Avoid using harsh organic solvents for cleaning as they can damage the plastic parts.
- 5.3. The cleaning process should occur at room temperature, and the devices should not be washed for more than one minute.
- 5.4. After using water in the cleaning process, promptly remove excess moisture from the component by utilizing forced-air drying.

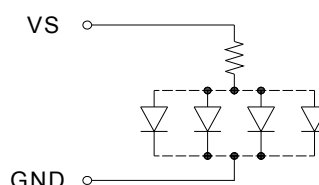
6. Circuit Design Notes

- 6.1. Protective current-limiting resistors may be necessary to operate the LEDs within the specified range.
- 6.2. LEDs mounted in parallel should each be placed in series with its own current-limiting resistor.

Recommended Set-up



Invalid Set-up



- 6.3. The driving circuit should be designed to protect the LED against reverse voltages and transient voltage spikes when the circuit is powered up or shut down.
- 6.4. The safe operating current should be selected by taking into account the maximum ambient temperature of the operating environment.
- 6.5. Extended reverse bias should be avoided as it may result in metal migration, leading to an escalation in leakage current or potential short circuits.

7. LED Storage Instructions

- 7.1. Store LEDs at or below 30°C and 80% relative humidity (RH) before opening the package.
- 7.2. LEDs should be used within one year of purchase.
- 7.3. After opening the package, store LEDs at or below 30°C and 60% RH.

8. ESD (Electrostatic Discharge)

Static Electricity or power surge will damage the LED. Suggestions to prevent ESD damage:

- 8.1. Use of a conductive wrist band or anti-electrostatic glove when handling these LEDs.
- 8.2. All devices, equipment, and machinery must be properly grounded.
- 8.3. Work tables, storage racks, etc. should be properly grounded.

Disclaimer

1. Product Material and Specification Adjustment Rights:

LuckyLight reserves the right to update product materials or specifications to improve reliability, functionality, design, or for other valid reasons.

2. Description of Data in Datasheets:

The data presented in this datasheet represents typical values and does not constitute guaranteed figures. The data provided is for reference purposes only.

3. Compliance with Usage Instructions:

When using this product, please strictly adhere to the absolute maximum ratings and instructions outlined in the specification sheets. LuckyLight shall not be held responsible for any damage resulting from non-compliance with these instructions.

4. Application Limitations:

This product is not intended for applications in military, aviation, automotive, medical, life-sustaining, or life-saving fields where failure could cause personal injury or death. For specific application requirements, please consult an authorized LuckyLight sales representative.

5. Disclaimer:

LuckyLight strives for accuracy in its datasheets, specifications, and disclosures. However, we cannot be held liable for any errors or omissions. Product suitability for specific applications is the customer's responsibility.

6. Limitation of Liability:

LuckyLight's liability is limited to the cost of the product. We are not liable for any damages arising from product application, continued production, or any product usage.

Revision History

Version	Date	Contents	Page
Version 1	December 19 , 2007	Original Version	/
Version 2	August 7, 2009	Update the layout of the specifications data sheet	/
Version 3	March 16, 2017	Optimize product data	4
Version 4	December 8, 2022	Update the company logo, product images, specification drawings, and optical-electric curve charts	1-6